

Transform Affinity Settings

Transform Knowledgebase articles

After licensing Transform, the Runtime server will not become "active" (unlicensed)

Multiple CPU's - setting the Affinity settings

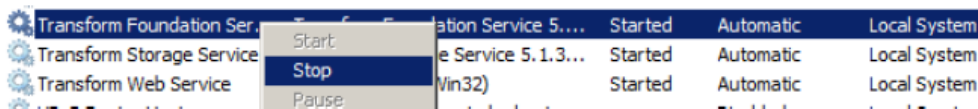
This is down to your licenses and the number of CPUs they can run on. This is not a fix or a workaround. It just allows Transform to run on the correct number of CPUs. If you have 4 CPUs on your machine, but have only bought a license for 2, Transform will not work as it sees all 4 to start with. You must therefore configure it to only use 2.

If you have a dual processor on your server - you need to change the Start-up parameters on your Transform Foundation Server service

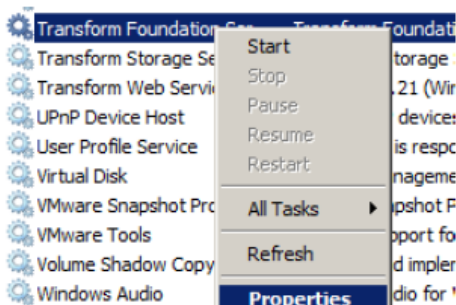
How to Do:

In Services

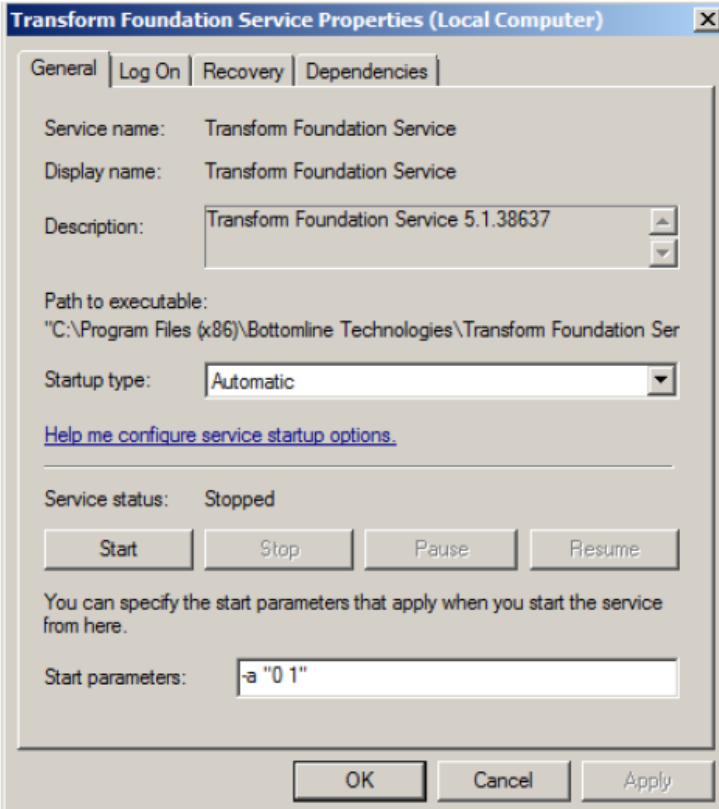
Stop the **Transform Foundation Server** service



Right-click on Transform Foundation Server service and select properties



In the **Start parameters box** - enter the following: -a "0 1"
NB: there is a space after the -a



Transform Foundation Service Properties (Local Computer)

General | Log On | Recovery | Dependencies

Service name: Transform Foundation Service
Display name: Transform Foundation Service
Description: Transform Foundation Service 5.1.38637
Path to executable: "C:\Program Files (x86)\Bottomline Technologies\Transform Foundation Ser
Startup type: Automatic
[Help me configure service startup options.](#)

Service status: Stopped
Start Stop Pause Resume

You can specify the start parameters that apply when you start the service from here.
Start parameters: -a "0 1"

OK Cancel Apply

Then click on **Start** (it will not work if you select OK or Apply)
NB : This adds a registry entry

Start

It's a fix for a dual processor so the licence is split over 2 CPUs.
If there were 4 CPUs it would be -a "0 1 2 3"